

Test management

Enterprise quality management

End-to-end

Complete coverage of testing needs, from planning to execution and reporting. Seamless integration with requirements management

Real-time

Information is instantly updated across multiple users. Everyone sees data changes online

Enterprise

Highly scalable, enterprise security, user configurable

Collaborative

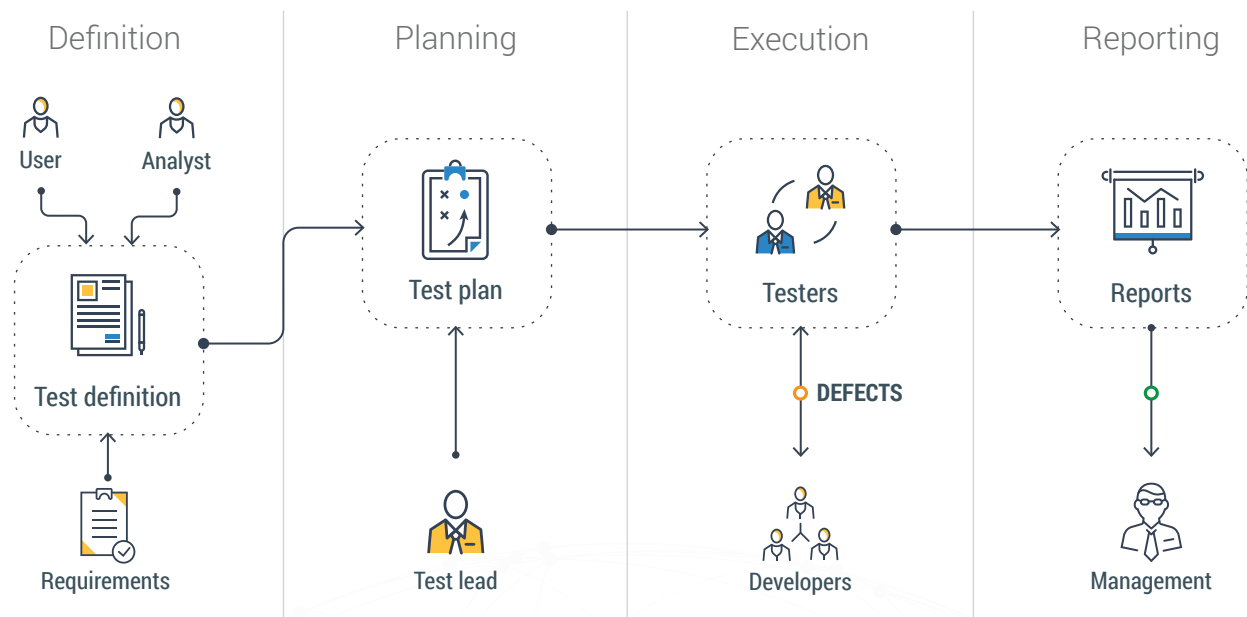
Discuss, approve and design test cases online in a team. Test handover support

Intuitive

Modern, simple user interface, convenient for beginners and professionals

Integration

Integration adapters for external systems, near real-time synchronization



Common features available in Conclusion platform

Fully WEB-based UI

Export and import

External API

Roles and permissions

Rich text editor

Attachments

Reporting

Approvals

Configurable lifecycle

Notifications

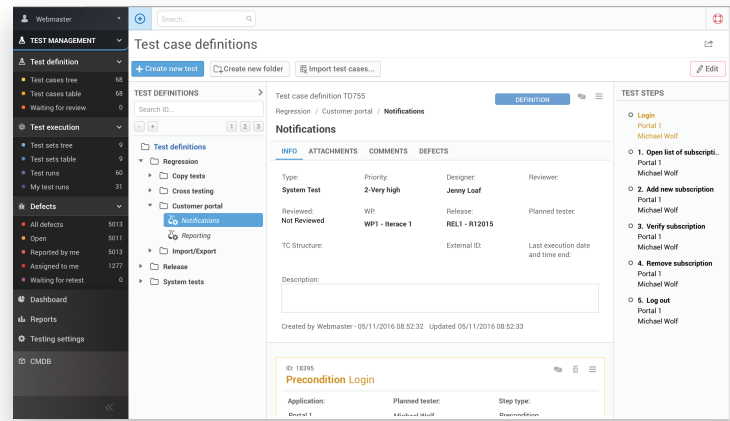
Tasks

Role based interface

01

Test definitions catalogue

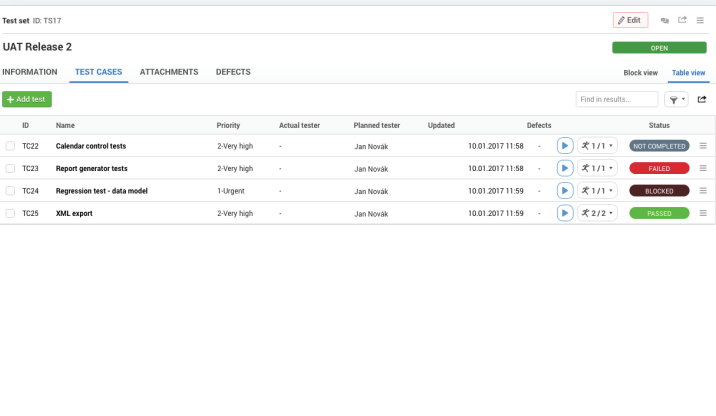
Improve quality of application by regression testing.
Keep all test definitions in a single place, shared to all users.
Conclusion allows collaborative editing of test definitions and embedded approval process



02

Test planning

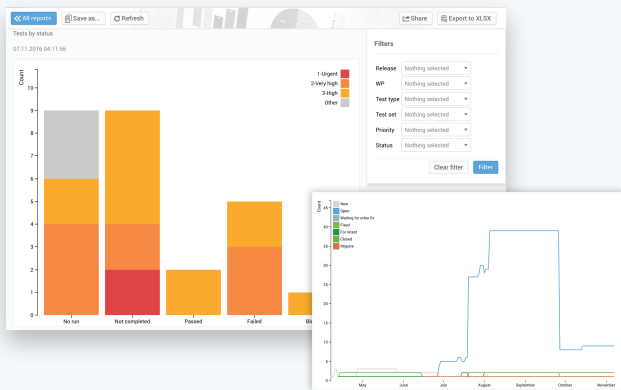
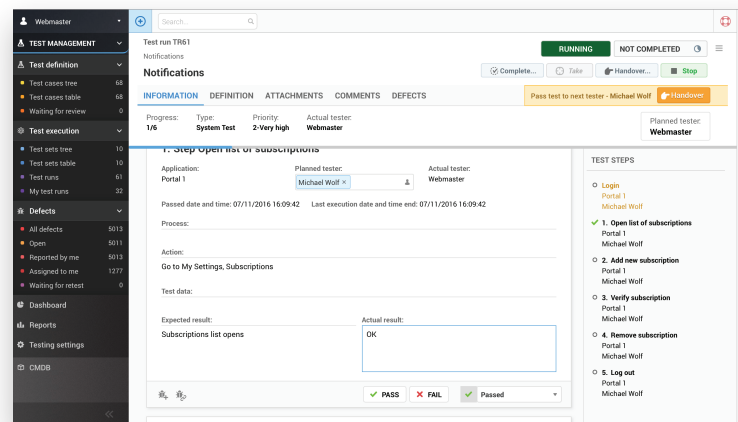
Test leads and test managers may assign test definitions to test sets and track execution of tests within test sets. System supports multiple test runs per test and parallel testing. Proper planning allows faster execution and better utilization of testers



03

Test execution

Test execution supports permissions management and automated test handover. Multiple users may execute a single test and see each other results immediately. Defect management is integrated with test execution



04

History and reporting

Conclusion logs all user activities, keeping history of all objects. For audit or management reports purposes it is essential to keep track of each change. Conclusion may compare versions and show differences graphically. Reporting is integrated into the system and provides a range of essential preloaded real-time reports as well